

System Settings

Filter...


30pt

28pt

9pt

196pt

18pt



30pt

Appearance

30pt

Workspace

30pt

Style

30pt

Network

30pt

72pt

Hardware

315pt

15pt

736pt

768pt

736pt

216pt

77.9pt

360.7pt

48pt

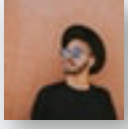
14.4pt


14.4pt

DEFAULTS


RESET


APPLY



 Appearance

 Workspace

 Style

 Network

 Hardware



WORKSPACE THEME

 System Theme

 Desktop Theme

 Cursor Themes

 Splash Screen Theme

COLORS


 Colors

FONTS

 Fonts

 Font Management

ICONS

 Icons

 Emoticons

APPLICATION STYLE

 Widget Style



Future Conky 2 2.1



Kvantum Glow 0.2

PixelFun3 Fixed 1.3



Kvantum Glow 0.2



PixelFun3 Fixed 1.3



HELP

DEFAULTS

RESET

APPLY

System Settings

Filter...

WORKSPACE THEME



System Theme



Desktop Theme



Cursor Themes



Splash Screen Theme

COLORS



Colors

FONTS



Fonts



Font Management

ICONS



Icons



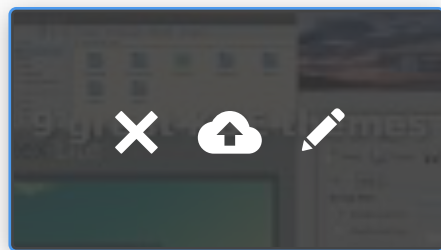
Emoticons

APPLICATION STYLE



Widget Style

Appearance > Workspace Theme > System Theme



Future Conky 2 2.1



Kvantum Glow 0.2



PixelFun3 Fixed 1.3



Kvantum Glow 0.2



PixelFun3 Fixed 1.3



HELP

DEFAULTS

RESET

APPLY

System Settings

Filter...

Workspace Theme

 Look and Feel

 Desktop Theme

 Cursor Themes

 Splash Screen Themes

Colors


 Colors


Fonts

 Look and Feel

 Font Management

Icons

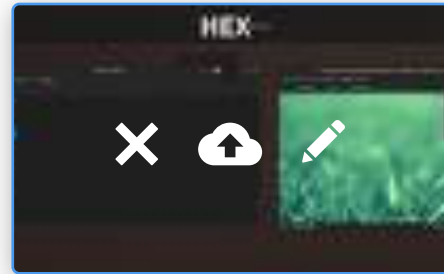
 Icons

 Emoticons

Application Style

 Widget Style

Appearance > Workspace Theme > Desktop Theme



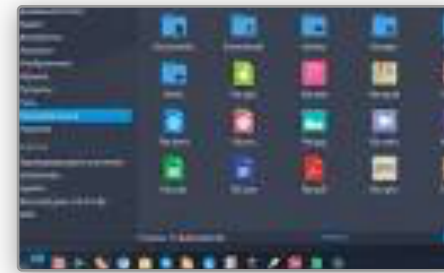
Breeze



Oxygen



Air



Breeze Dark



Breeze Light



INSTALL FROM FILE

HELP

DEFAULTS

RESET

APPLY

System Settings

Filter...

Workspace Theme

Look and Feel

Desktop Theme

Cursor Theme

Splash Screen Theme

Colors

Colors

Fonts

Look and Feel

Font Management

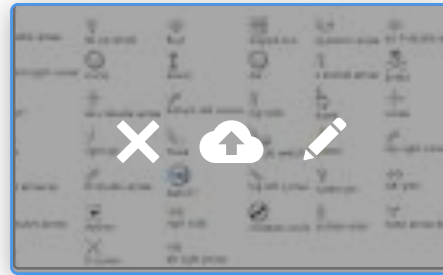
Icons

Emoticons

Application Style

Widget Style

Appearance > Workspace Theme > Cursor Theme



Breeze Amber (Source)



Breeze Amber (Compiled)



Breeze Purple (Source)



HELP

DEFAULTS




RESET

APPLY

System Settings

Filter...

Workspace Theme

-  Look and Feel
-  Desktop Theme
-  Cursor Themes

Splash Screen Theme

Colors



-  Colors

Fonts

-  Look and Feel

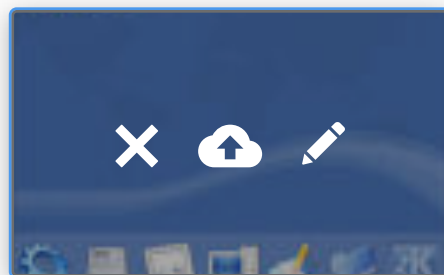
-  Font Management

Icons

-  Icons
-  Emoticons

Application Style

-  Widget Style



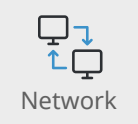
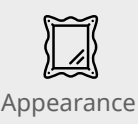
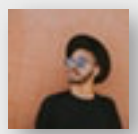
Breeze Amber (Source)



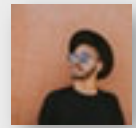
Breeze Amber (Compiled)



Breeze Purple (Source)



System Settings



Filter...

Workspace Theme

Look and Feel

Desktop Theme

Cursor Themes

Splash Screen

Colors

Colors

Fonts

Fonts

Font Management

Icons

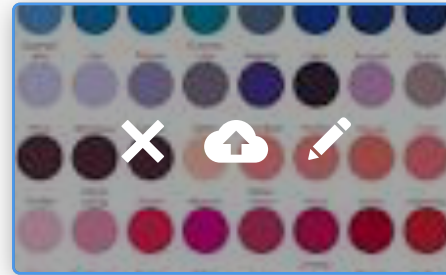
Icons

Emoticons

Application Style

Widget Style

Appearance > Colors > Colors



yellow



maroon



green



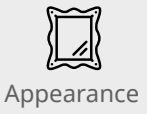
maroon



fuchsia



Add New



HELP

DEFAULTS

RESET

APPLY

System Settings

Filter...

WORKSPACE THEME

- Look and Feel
- Desktop Theme
- Cursor Themes
- Splash Screen

COLORS

Colors

FONTS

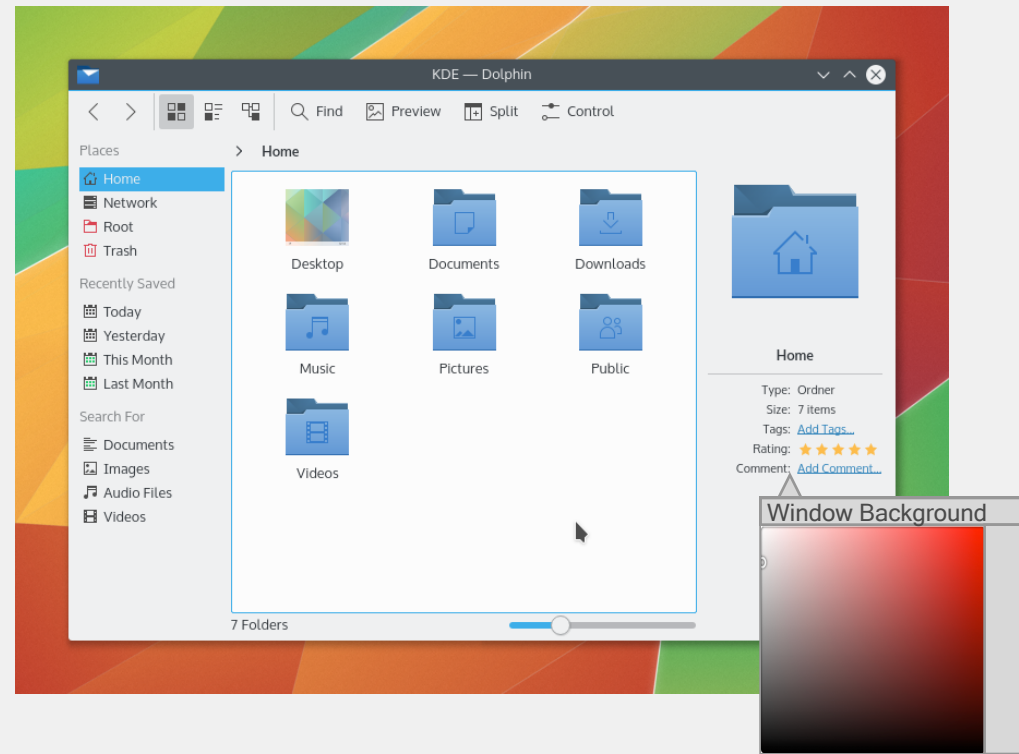
- Fonts
- Font Management

ICONS

- Icons
- Emoticons

APPLICATION STYLE

Widget Style



- Inactive selection changes color
- Shade sorted column in lists
- Apply colors to non-Qt Applications

Window Edge Shading Contrast

Active Window Colors Apply inactive window effects

Disabled

- Intensity
- Color
- Text Contrast


System Settings

Filter...

Workspace Theme

 Look and Feel

 Desktop Theme

 Cursor Themes

 Splash Screen

Colors

 Colors

Fonts

 Fonts

 Font Management

Icons

 Icons

 Emoticons

Application Style

 Widget Style

Fonts > Fonts

Change all fonts

Size

Change fonts per element

Fixed width

Small

Toolbar

Menu

Window title

Enable smooth fonts

Exclude range from font smoothing

To

Sub-pixel rendering type

Hinting style

HELP

DEFAULTS

RESET

APPLY

System Settings




Filter...

Workspace Theme

 Look and Feel

 Desktop Theme

 Cursor Themes

 Splash Screen

Colors

 Colors


Fonts

 Fonts

 **Font Management**

Icons

 Icons

 Emoticons

Application Style

 Widget Style

Fonts > Font Management

All Groups

All fonts

Personal fonts

System fonts

CREATE FONT GROUP

DELETE FONT GROUP

Font Families

Bitstream Charter

A red flair
silhouetted the
jagged edge of a
wing.



Century School...

A red flair
silhouetted the
jagged edge of a
wing.

Courier 10 Pitch

A red flair
silhouetted the
jagged edge of a
wing.

DejaVu Sans

A red flair
silhouetted the
jagged edge of a
wing.

DejaVu Sans Mono

A red flair
silhouetted the
jagged edge of a
wing.

Dinbats

A red flair
silhouetted the
jagged edge of a
wing.

FreeMono

A red flair
silhouetted the
jagged edge of a
wing.

FreeSans

A red flair
silhouetted the
jagged edge of a
wing.

FreeSerif

A red flair
silhouetted the
jagged edge of a
wing.



SCAN FOR DUPLICATES

HELP

DEFAULTS

RESET

APPLY

System Settings

Filter...

Workspace Theme

Look and Feel

Desktop Theme

Cursor Themes

Colors
Splash Screen

Fonts
Colors

Look and Feel

Icons
Font Management

Icons

Emoticons

Application Style

Widget Style

Icons > Icons



Uzbekistan



Guinea



Belgium



Add New Icons

INSTALL FROM FILE

DELETE ICONS

ADVANCED

HELP

DEFAULTS

RESET

APPLY

System Settings



Filter...

Icons > Icons > Advanced

Workspace Theme

- Look and Feel
- Desktop Theme
- Cursor Themes
- Splash Screen

Colors

- Colors

Fonts

- Look and Feel
- Font Management

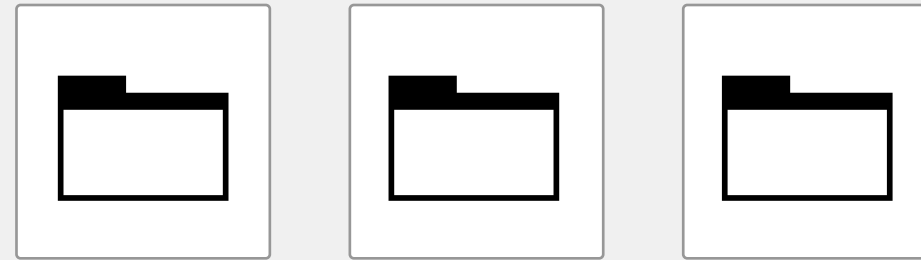
Icons

- Icons

- Emoticons

Application Style

- Widget Style



Size

Edit effects for specific icon groups

- Desktop
- Toolbar
- Main Toolbar
- Small Icons
- Panel
- Dialogs
- All Icons

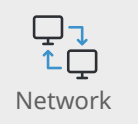
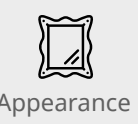
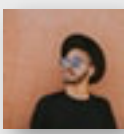
- Enable icon animations
Some icons have special animations associated to them.

HELP

DEFAULTS

RESET

APPLY



System Settings



Filter...

Workspace Theme

Look and Feel

Desktop Theme

Cursor Themes

Splash Screen

Colors

Colors

Fonts

Look and Feel

Font Management

Icons

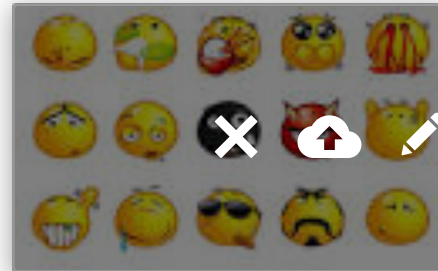
Icons

Emoticons

Application Style

Widget Style

Icons Emoticons



KeyMoji



SwiftKey Key...



Emoji Free



Imoji



Emoji Type



Emojiyo



Add New Emojis

INSTALL FROM FILE

Edit

HELP

DEFAULTS

RESET

APPLY

System Settings



Filter...


Icons > Emoticons > Edit emoji theme

Workspace Theme

 Look and Feel

 Desktop Theme

 Cursor Themes


 Splash Screen

Colors

 Colors

Fonts

 Fonts

 Font Management

Icons

 Icons

 Emoticons

Application Style

 Widget Style



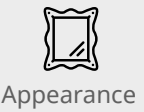
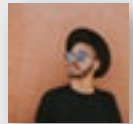
Edit

HELP

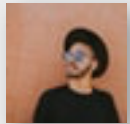
DEFAULTS

RESET

APPLY



System Settings



Filter...

Workspace Theme

- Look and Feel
- Desktop Theme
- Cursor Themes
- Splash Screen

Colors

- Colors

Fonts

- Fonts
- Font Management

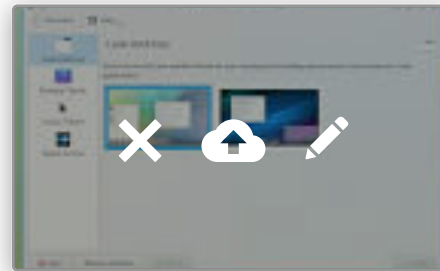
Icons

- Icons
- Emoticons

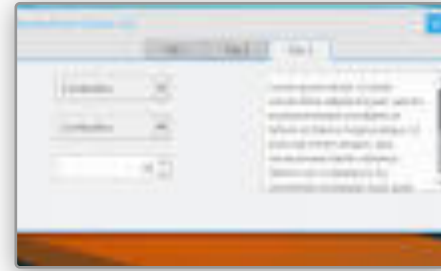
Application Style

- Widget Style**
- Window Decorations
- GNOME Application Style

Application Style > Widget Style



Uzbekistan



Guinea



Belgium



Add New Icons

FINE TUNE



HELP

DEFAULTS

RESET

APPLY

System Settings



Filter...

Application Style > Widget Style > Fine Tune

Workspace Theme

 Look and Feel

 Desktop Theme

 Cursor Themes

 Splash Screen

Colors

 Colors


Fonts

 Fonts

 Font Management

Icons

 Icons

 Emoticons

Application Style

 **Widget Style**

Main toolbar text location

Secondary toolbar text location

Menubar Style

Show icons on buttons

Show icons on menus



Appearance



Workspace



Style



Network



Hardware



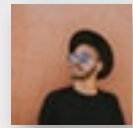
HELP

DEFAULTS

RESET

APPLY

System Settings



Filter...

Workspace Theme

 Look and Feel

 Desktop Theme

 Cursor Themes

 Splash Screen

Colors

 Colors

Fonts

 Look and Feel

 Font Management

Icons

 Icons

 Emoticons

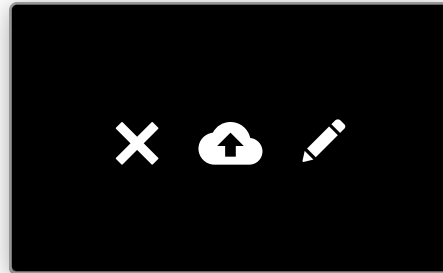
Application Style

 Widget Style

 Window Decorations

 GNOME Application Style

Application Style > Window Decorations



Uzbekistan



Guinea



Belgium



Add New Icons

FINE TUNE



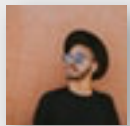
HELP

DEFAULTS

RESET

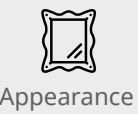
APPLY

System Settings



Filter...

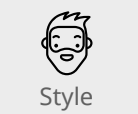
Workspace Theme



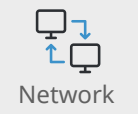
Appearance



Workspace



Style



Network



Hardware



Look and Feel



Desktop Theme



Cursor Themes



Colors

Splash Screen



Fonts

Colors



Fonts



Icons

Font Management



Icons



Emoticons

Application Style



Widget Style



Window Decorations



GNOME Application Style

Application Style > Window Decorations > Fine Tune

Window Titlebar

Drag and drop elements in and out of the titlebar to your preference

Additional Options

Border size

Double-click menu button to close

HELP

DEFAULTS

RESET





APPLY

System Settings



Filter...

Workspace Theme

-  Look and Feel
-  Desktop Theme
-  Cursor Themes
-  Splash Screen

Colors

-  Colors

Fonts



-  Fonts

-  Font Management

-  Icons

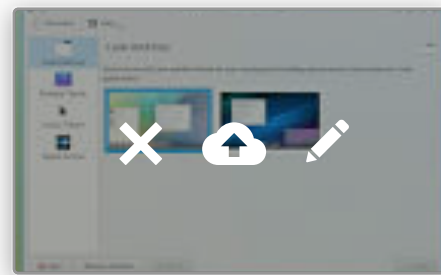
-  Emoticons

Application Style

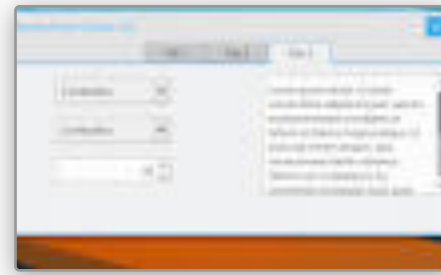
-  Widget Style
-  Window Decorations

-  GNOME Application Style

Application Style > GNOME Application Style



Uzbekistan



Guinea



Belgium



Add New Icons

MORE OPTIONS

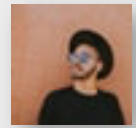
HELP

DEFAULTS

RESET

APPLY

System Settings



Filter...

Workspace Theme



Look and Feel



Appearance



Desktop Theme



Cursor Themes



Workspace



Splash Screen

Colors



Style



Colors

Fonts



Network



Fonts



Icons

Font Management



Hardware



Icons



Emoticons

Application Style



Widget Style



Window Decorations



GNOME Application Style

Application Style > GNOME Application Style > More Options

Behavior

GTK style toolbar

Show icons in GTK buttons

Show icons in GTK menus

On left click in the scrollbar Jump to the mouse cursor position

Scroll one page up/down



HELP

DEFAULTS

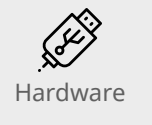
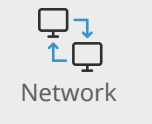
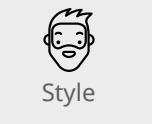
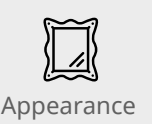
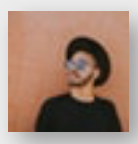
RESET

APPLY

System Settings

Filter...

Workspace > Workspace



Workspace

Workspace

Desktop Effects

Screen Edges

Touch Screen

Screen Locking

Virtual Desktops

Activities

Window Management

Window Behavior

Task Switcher

KWin Scripts

Window Rules

Shortcuts

Standard Shortcuts

Global Shortcuts

Custom Shortcuts

- Show Informational Tips on hover
- Visual feedback for status changes

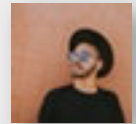
HELP

DEFAULTS

RESET

APPLY

System Settings



Filter...

Workspace

Workspace

Desktop Effects

Screen Edges

Touch Screen

Screen Locking

Virtual Desktops

Activities

Window Management

Window Behavior

Task Switcher

KWin Scripts

Window Rules

Shortcuts

Standard Shortcuts

Global Shortcuts

Custom Shortcuts

Workspace > Desktop Effects



Accessibility



Invert



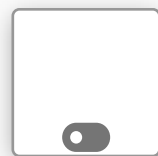
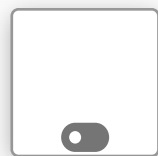
Mouse Click



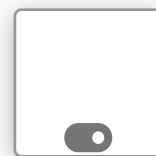
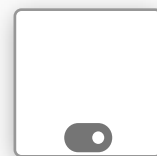
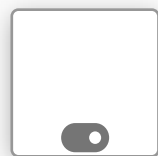
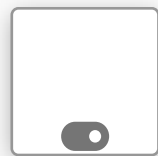
Snap Helper



Track Mouse



Accessibility



GET NEW EFFECTS

HELP

DEFAULTS

RESET

APPLY



System Settings

Filter...

Workspace

Workspace

Desktop Effects

Screen Edges

Touch Screen

Screen Locking

Virtual Desktops

Activities

Window Management

Window Behavior

Task Switcher

KWin Scripts

Window Rules

Shortcuts

Standard Shortcuts

Global Shortcuts

Custom Shortcuts

Workspace > Screen Edges

Active Screen Corners and Edges

Trigger actions with each corner and edge in your display.

- No action
- Show Desktop
- Lock Screen
- Run Command
- Activity Manager
- Application Launcher
- Present Windows - All Desktops
- Present Windows - Current Desktop
- Present Windows - Current Application
- Desktop Grid
- Desktop Cube
- Desktop Cylinder
- Desktop Sphere
- Toggle window switching
- Toggle alternative window switching

- Window Management** Maximize windows by dragging them to the top edge of the screen
- Tile windows by dragging them to the right or left edge of the screen

Window Tile activation
 Tile window when nearing this percentage from the screen edges

Desktop Switch from Edges Switch desktop when cursor is on right or left edge of the screen

Edge

Activation delay

Reactivation delay

System Settings

Filter...

Workspace

- Workspace
- Desktop Effects
- Screen Edges

Touch Screen

- Screen Locking
- Virtual Desktops
- Activities

Window Management

- Window Behavior
- Task Switcher
- KWin Scripts
- Window Rules

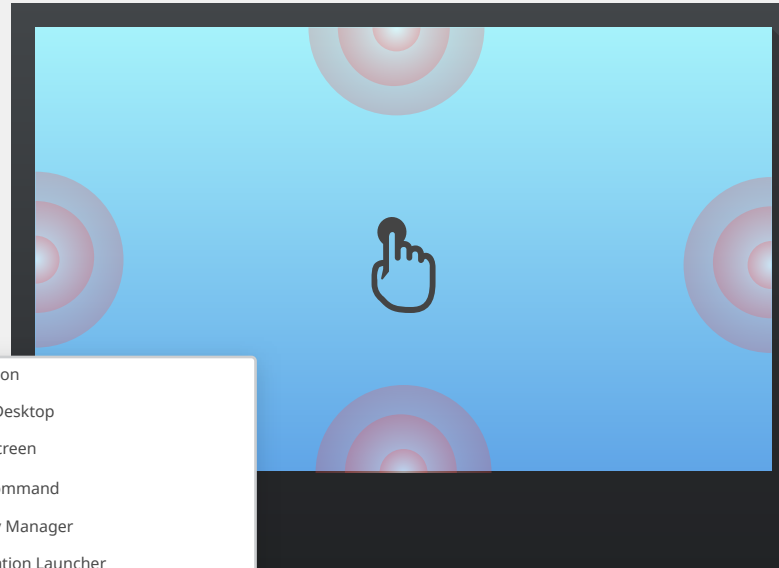
Shortcuts

- Standard Shortcuts
- Global Shortcuts
- Custom Shortcuts

Workspace > Touch Screen

Touch swipe gestures

Swipe from the edge of the screen towards the center to trigger specific actions.



- No action
- Show Desktop
- Lock Screen
- Run Command
- Activity Manager
- Application Launcher
- Present Windows - All Desktops
- Present Windows - Current Desktop
- Present Windows - Current Application
- Desktop Grid
- Desktop Cube
- Desktop Cylinder
- Desktop Sphere
- Toggle window switching
- Toggle alternative window switching



HELP

DEFAULTS

RESET

APPLY

System Settings

Filter...

Workspace


 Workspace

 Desktop Effects

 Screen Edges

 Touch Screen

 **Screen Lock**

 Virtual Desktops

 Activities

Window Management

 Window Behavior

Task Switcher

KWin Scripts

Window Rules

Shortcuts

 Standard Shortcuts

 Global Shortcuts

 Custom Shortcuts

Workspace > Screen Lock

Enable Screen Lock

Keep screen locked on resume

Lock screen automatically after

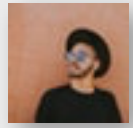
Require password after

Lock screen keyboard shortcut

Lock Screen Wallpaper

Wallpaper type

Color



Appearance



Workspace



Style



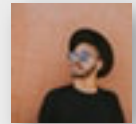
Network



Hardware



System Settings



Filter...

Workspace

Workspace

Desktop Effects

Screen Edges

Touch Screen

Screen Locking

Virtual Desktops

Activities

Window Management

Window Behavior

Task Switcher

KWin Scripts

Window Rules

Shortcuts

Standard Shortcuts

Global Shortcuts

Custom Shortcuts

Appearance

Workspace

Style

Network

Hardware

Workspace > Virtual Desktops

Desktops



Name: Desktop 1

Switching Desktop navigation wraps around

Desktop Effect Animation Slide

Desktop Switch On-Screen Display

Duration

Show desktop layout indicators

Shortcuts

Show shortcuts for all possible desktops

HELP

DEFAULTS

RESET

APPLY



System Settings



Filter...

Workspace

- Workspace
- Desktop Effects
- Screen Edges
- Touch Screen
- Screen Locking
- Virtual Desktops

Activities

Window Management

- Window Behavior
- Task Switcher
- KWin Scripts
- Window Rules

Shortcuts

- Standard Shortcuts
- Global Shortcuts
- Custom Shortcuts

Workspace > Activities

Activities



Uzbekistan



Guinea



Belgium



Add New Icons

ADVANCED

Remove

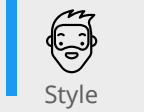
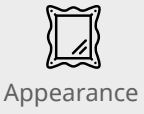
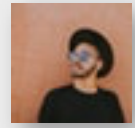
Edit

HELP

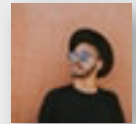
DEFAULTS

RESET

APPLY



System Settings



Filter...

Workspace

Workspace

Desktop Effects

Screen Edges

Touch Screen

Screen Locking

Virtual Desktops

Activities

Window Management

Window Behavior

Task Switcher

KWin Scripts

Window Rules

Shortcuts

Standard Shortcuts

Global Shortcuts

Custom Shortcuts

Appearance

Workspace

Style

Network

Hardware



Workspace > Activities > Advanced

Shortcuts

Switching Remember the current virtual desktop for each activity (needs restart)

Keep history

[CLEAR HISTORY](#)

Remember opened documents For all applications

Do not remember

Only for specific applications



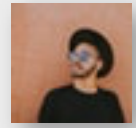
[HELP](#)

[DEFAULTS](#)

[RESET](#)

[APPLY](#)

System Settings



Filter...

Workspace

Workspace

Desktop Effects

Screen Edges

Touch Screen

Screen Locking

Virtual Desktops

Activities

Window Management

Window Behavior

Task Switcher

KWin Scripts

Window Rules

Shortcuts

Standard Shortcuts

Global Shortcuts

Custom Shortcuts

Window Management > Window Behavior

Focus

Activating Windows Policy

Focus stealing prevention Delay focus by

Raising windows Click raises active window
Raise on hover, delayed by

Titlebar Actions

Double-click

Wheel event

Titlebar & Frame

Active

Inactive

Left button

Middle button

Right button

Maximize Button Left button Middle button Right button

Window Actions

Inactive Inner Window

Left button

Middle button

Right button

Inner Window, Titlebar and Frame Modifier Key

Left button

Middle button

Right button

Wheel

HELP

DEFAULTS

RESET

APPLY

System Settings

Filter...

Workspace


 Workspace

 Desktop Effects

 Screen Edges

 Touch Screen

 Screen Locking

 Virtual Desktops

 Activities

Window Management

 Window Behavior

Task Switcher

KWin Scripts

Window Rules

Shortcuts

 Standard Shortcuts

 Global Shortcuts

 Custom Shortcuts

Window Management > Window Behavior > Advanced

Moving Windows Display window geometry when moving or resizing

Snap Zones

Border snap zone

Window snap zone

Center snap zone

Snap windows only when overlapping

Shading

Enable Hover and delay by

Window Tabbing

Automatically group similar windows

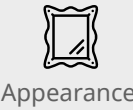
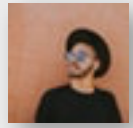
Switch to automatically grouped windows immediately

Placement

Smart

Special Windows

Hide utility windows for inactive applications



System Settings

Filter...

Workspace


 Workspace

 Desktop Effects

 Screen Edges

 Touch Screen

 Screen Locking

 Virtual Desktops

 Activities

Window Management

 Window Behavior

Task Switcher

KWin Scripts

Window Rules

Shortcuts

 Standard Shortcuts

 Global Shortcuts

 Custom Shortcuts

Window Management > Task Switcher > Main

Visualization Show selected window

Breeze ▾

Shortcuts

All windows Forward ▾

Reverse ▾

Current Application Forward ▾

Reverse ▾

Content

Sort order Recently used ▾

Include "Show Desktop" icon

Only one window per application

Filter windows by Virtual desktops

Current desktop

All other desktops

Activities Current desktop

All other desktops

Minimization Visible window

Hidden windows

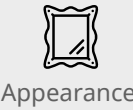
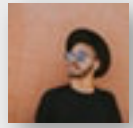
ALTERNATIVE

HELP

DEFAULTS

RESET

APPLY



System Settings

Filter...

Workspace


 Workspace

 Desktop Effects

 Screen Edges

 Touch Screen

 Screen Locking

 Virtual Desktops

 Activities

Window Management

 Window Behavior

Task Switcher

KWin Scripts

Window Rules

Shortcuts

 Standard Shortcuts

 Global Shortcuts

 Custom Shortcuts

Window Management > Task Switcher > Alternative

Visualization Show selected window

Breeze

Shortcuts

All windows

Current Application

Content

Sort order

Include "Show Desktop" icon

Only one window per application

Filter windows by Virtual desktops

Current desktop

All other desktops

Activities Current desktop

All other desktops

Minimization Visible window

Hidden windows

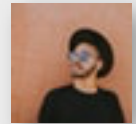
HELP

DEFAULTS

RESET

APPLY

System Settings



Filter...

Workspace



Workspace



Appearance



Desktop Effects



Screen Edges



Workspace



Touch Screen



Style



Screen Locking



Virtual Desktops



Network



Activities

Window Management



Window Behavior



Hardware

Task Switcher

KWin Scripts

Window Rules

Shortcuts



Standard Shortcuts



Global Shortcuts



Custom Shortcuts



Window Management > Kwin Scripts



Enforce Window Decoratins on GTK+ Windows

Fixes functional deficits for client-side decorated windows.



Minimize All

Adds a shortcut to minimize all windows or all such way minimized windows



Synchronize Skip Switcher with Taskbar

Hides all windows marked as Skip Taskbar to be also excluded from window switchers (e.g. Alt+Tab)



Video Wall

Spans fullscreen video player over all attached screens to create a Video Wall

[GET MORE KWIN SCRIPTS](#)

HELP

DEFAULTS

RESET

APPLY

System Settings



Filter...

Workspace



Workspace



Desktop Effects



Screen Edges



Touch Screen



Screen Locking



Virtual Desktops



Activities

Window Management



Window Behavior

Task Switcher

KWin Scripts

Window Rules

Shortcuts



Standard Shortcuts

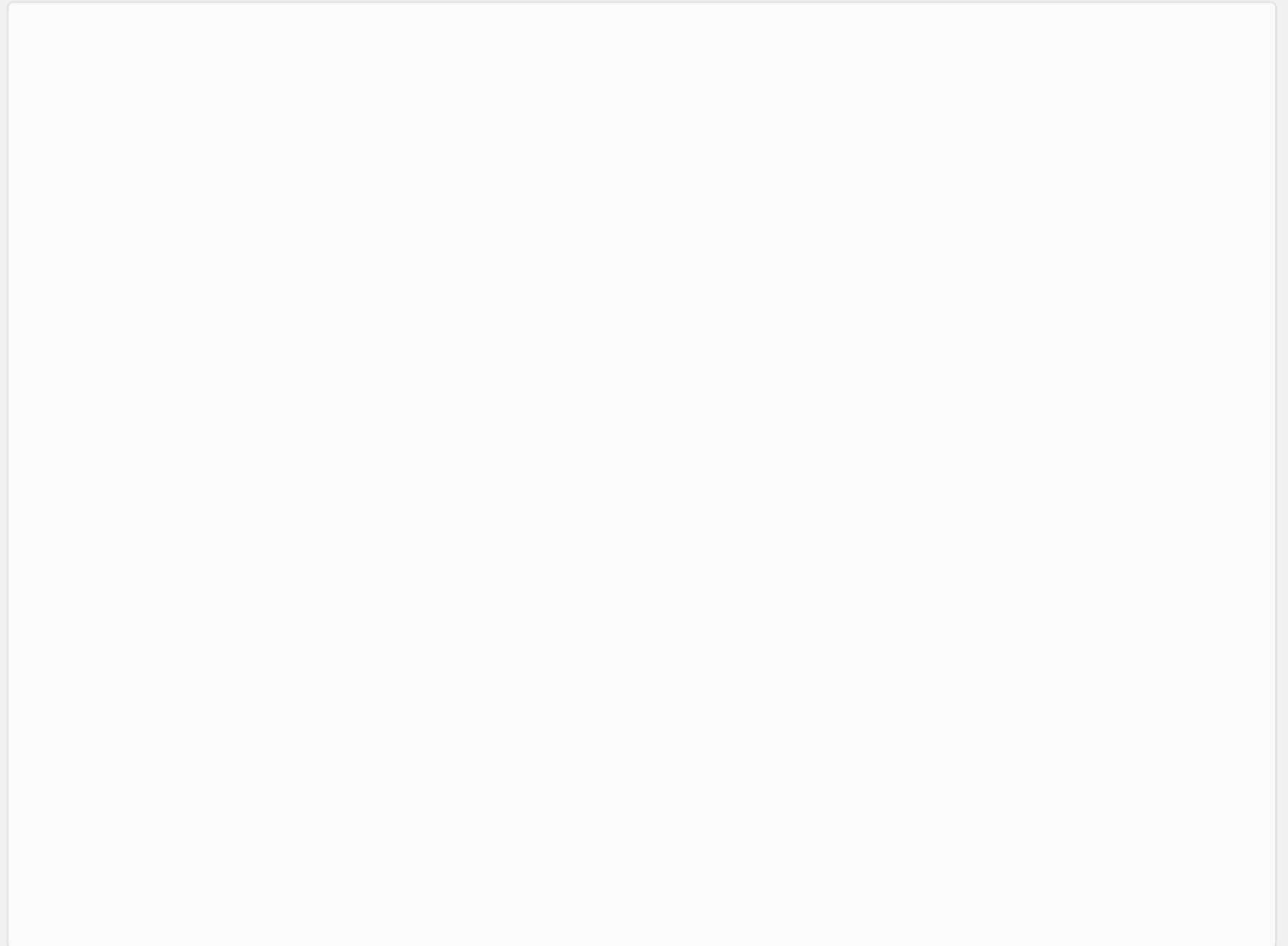


Global Shortcuts



Custom Shortcuts

Window Management > Kwin Scripts



NEW

IMPORT

EXPORT

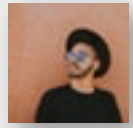
IMPORT KWIN SCRIPT

HELP

DEFAULTS

RESET

APPLY



Appearance

Workspace

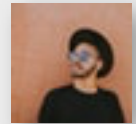
Style

Network

Hardware



System Settings



Filter...

Workspace



Workspace



Appearance



Desktop Effects



Workspace



Screen Edges



Touch Screen



Style



Screen Locking



Virtual Desktops



Network



Activities

Window Management



Window Behavior

Task Switcher

KWin Scripts

Window Rules

Shortcuts



Standard Shortcuts



Global Shortcuts



Custom Shortcuts



Window Management > Kwin Scripts

NEW

IMPORT

EXPORT

IMPORT KWIN SCRIPT

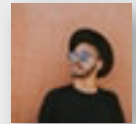
HELP

DEFAULTS

RESET

APPLY

System Settings



Filter...

Workspace

Workspace

Desktop Effects

Screen Edges

Touch Screen

Screen Locking

Virtual Desktops

Activities

Window Management

Window Behavior

Task Switcher

KWin Scripts

Window Rules

Shortcuts

Standard Shortcuts

Global Shortcuts

Custom Shortcuts

Shortcuts > Standard Shortcuts

Standard Shortcuts

| Command | Shortcut Key | Alternative Shortcut Key |
|---------------------------|-----------------------|--------------------------|
| About Application | | |
| About KDE | | |
| Activate Next Tab | Activate Next Tab | Activate Next Tab |
| Activate Previous Tab | Activate Previous Tab | Activate Previous Tab |
| Actual Size | | |
| Add Bookmark | Add Bookmark | |
| Back | Back | Back |
| Back | Back | |
| Backward Word | Backward Word | |
| Beginning of Line | Beginning of Line | |
| Clear | | |
| Close | Close | Close |
| Configure Notifications | | |
| Configure Shortcuts | | |
| Configure System Settings | | |
| Configure Toolbars | | |
| Copy | Copy | Copy |
| Cut | Cut | Cut |
| Delete | Delete | |
| Delete Word Backwards | Delete Word Backwards | |
| Deselect | Deselect | |
| Donate | Donate | |
| Edit Bookmarks | | |

Default

Custom

HELP

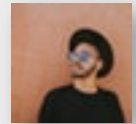
DEFAULTS

RESET

APPLY



System Settings



Filter...

Workspace



Workspace



Appearance



Desktop Effects



Workspace



Screen Edges



Touch Screen



Style



Screen Locking



Virtual Desktops



Network



Activities

Window Management



Window Behavior

Task Switcher

KWin Scripts

Window Rules

Shortcuts



Standard Shortcuts



Global Shortcuts



Custom Shortcuts



Shortcuts > Standard Shortcuts

Component

Search

- Accessibility
- Activity Switching
- Audio Volume
- KDE Daemon
- Konversation
- Power Management
- Run Command
- System Settings

Command

Global Key

Global Alternative Key

Toggle Screen Reader On/Off

Meta+Alt+S

IMPORT

EXPORT

SET ALL TO NONE

Default

Custom

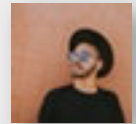
HELP

DEFAULTS

RESET

APPLY

System Settings



Filter...

Workspace



Workspace



Appearance



Desktop Effects



Workspace



Screen Edges



Touch Screen



Style



Screen Locking



Virtual Desktops



Network



Activities

Window Management



Window Behavior

Task Switcher

KWin Scripts

Window Rules

Shortcuts



Standard Shortcuts



Global Shortcuts



Web Shortcuts



Shortcuts > Web Shortcuts



Enable Web Shortcuts



Use favorite shortcuts only

| Name | Shortcut Key | Favorite |
|---------------------------|-----------------------|-----------------------|
| About Application | | |
| About KDE | | |
| Activate Next Tab | Activate Next Tab | Activate Next Tab |
| Activate Previous Tab | Activate Previous Tab | Activate Previous Tab |
| Actual Size | | |
| Add Bookmark | Add Bookmark | |
| Back | Back | Back |
| Back | Back | |
| Backward Word | Backward Word | |
| Beginning of Line | Beginning of Line | |
| Clear | | |
| Close | Close | Close |
| Configure Notifications | | |
| Configure Shortcuts | | |
| Configure System Settings | | |
| Configure Toolbars | | |
| Copy | Copy | Copy |
| Cut | Cut | Cut |
| Delete | Delete | |
| Delete Word Backwards | Delete Word Backwards | |
| Deselect | Deselect | |
| Donate | Donate | |
| Edit Bookmarks | | |



Default



Custom

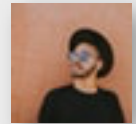
HELP

DEFAULTS

RESET

APPLY

System Settings



Filter...

Workspace



Workspace



Appearance



Desktop Effects



Workspace



Screen Edges



Touch Screen



Style



Screen Locking



Virtual Desktops



Network



Activities

Window Management



Window Behavior

Task Switcher

KWin Scripts

Window Rules

Shortcuts



Standard Shortcuts



Global Shortcuts



Web Shortcuts



Custom Shortcuts



Shortcuts > Web Shortcuts

Component

Search

- Accessibility
- Activity Switching
- Audio Volume
- KDE Daemon
- Konversation
- Power Management
- Run Command
- System Settings

| Command | Global Key | Global Alternative Key |
|-----------------------------|------------|------------------------|
| Toggle Screen Reader On/Off | Meta+Alt+S | |

IMPORT

EXPORT

SET ALL TO NONE

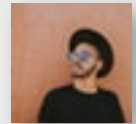
HELP

DEFAULTS

RESET

APPLY

System Settings



Filter...

Startup and Shutdown



Appearance



Workspace



Style



Network



Hardware



Login Screen (SSDM)



Autostart



Background Services



Desktop Selection



Boot Splash

Search



Window Behavior

Task Switcher

KWin Scripts

Window Rules

Shortcuts



Standard Shortcuts



Global Shortcuts



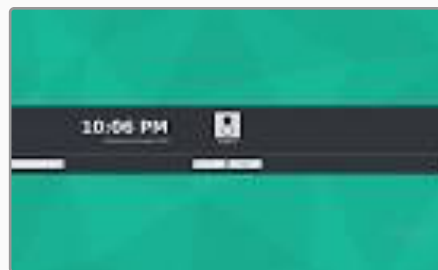
Custom Shortcuts

Startup and Shutdown > Theme

Theme



Breeze



Oxygen



Air



Breeze Dark



Breeze Light



HELP

DEFAULTS


RESET

APPLY

System Settings

Filter...


Startup and Shutdown

 Login Screen (SSDM)

 Autostart

 Background Services

 Desktop Selection

 Boot Splash

Search

 Window Behavior

Task Switcher

KWin Scripts

Window Rules

Shortcuts




 Standard Shortcuts

 Global Shortcuts

 Custom Shortcuts

Startup and Shutdown > Autostart

Automatically Started Applications

| Status | Name | Command | Run On |
|--------------------------|---|------------------|--------|
| <input type="checkbox"/> |  Firefox | /usr/bin/firefox | |
| <input type="checkbox"/> |  VLC | /usr/bin/vlc | |
| <input type="checkbox"/> |  Linux | /usr/bin/linux | |

ADD PROGRAM

ADD SCRIPT

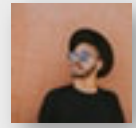
HELP

DEFAULTS

RESET

APPLY

System Settings



Filter...

Startup and Shutdown

Login Screen (SSDM)

Autostart

Background Services

Desktop Selection

Boot Splash

Search

Window Behavior

Task Switcher

KWin Scripts

Window Rules

Shortcuts

Standard Shortcuts

Global Shortcuts

Custom Shortcuts

Startup and Shutdown > Background Services

Load-on-demand Services

| Action | Service | Status | Description |
|--------|--------------------------|-------------|--|
| | Cookie Jar | Running | Stores network cookies |
| | Directory Watcher | Running | Monitors directories for changes |
| ▶ | Hardware Detection | Not running | Provides a user interface for hardware events |
| ▶ | Network Watcher | Not running | Keeps track of the network and updates directory listing of the... |
| ▶ | Recent Documents Watcher | Not running | Monitors "Recent Documents" folder for changes |
| ▶ | Search Folder Updater | Not running | Allows automatic updates of Search Folders |

| Action | Action | Service | Status | Description |
|--------------------------|--------|--------------------------|-------------|---|
| <input type="checkbox"/> | | Application menus daemon | Running | Stores network cookies |
| <input type="checkbox"/> | | Directory Watcher | Running | Monitors directories for changes |
| <input type="checkbox"/> | ▶ | Hardware Detection | Not running | Provides a user interface for hardware events |
| <input type="checkbox"/> | ▶ | Network Watcher | Not running | Keeps track of the network and updates directory... |
| <input type="checkbox"/> | ▶ | Recent Documents Watcher | Not running | Monitors "Recent Documents" folder for changes |
| <input type="checkbox"/> | ▶ | Search Folder Updater | Not running | Allows automatic updates of Search Folders |



HELP

DEFAULTS

RESET

APPLY

System Settings

Filter...


Startup and Shutdown

 Login Screen (SSDM)

 Autostart

 Background Services

 Desktop Session

 Boot Splash

Search

 Window Behavior

Task Switcher

KWin Scripts

Window Rules

Shortcuts

 Standard Shortcuts

 Global Shortcuts

 Custom Shortcuts


Startup and Shutdown > Desktop Selection

General Confirm logout
 Offer shutdown options


Default Leave Option End current session
 Turn off computer
 Restart computer

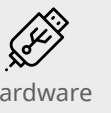
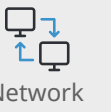
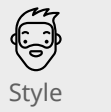
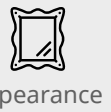
On Login Restore previous session
 Turn off computer
 Start with an empty session

Applications to be excluded from sessions

 Firefox `/usr/bin/firefox`

 VLC `/usr/bin/vlc`

 Linux `/usr/bin/linux`



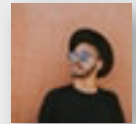
HELP

DEFAULTS

RESET

APPLY

System Settings



Filter...

Startup and Shutdown



Appearance



Workspace



Style



Network



Hardware



Search



Window Behavior

Task Switcher

KWin Scripts

Window Rules

Shortcuts



Standard Shortcuts



Global Shortcuts



Custom Shortcuts

Startup and Shutdown > Boot Splash



Breeze



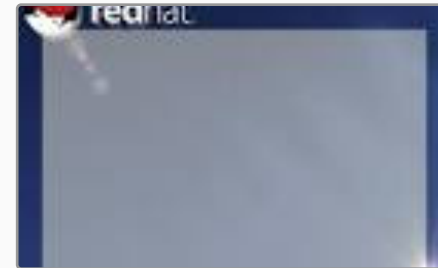
Oxygen



Air



Breeze Dark



Breeze Light



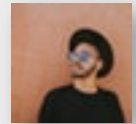
HELP

DEFAULTS

RESET


APPLY

System Settings



Filter...


Startup and Shutdown

 Login Screen (SSDM)

 Autostart

 Background Services

 Desktop Selection

 Boot Splash

Search

 File Search

Plasma Search

Shortcuts

 Standard Shortcuts

 Global Shortcuts

 Custom Shortcuts

Search > File Search

File Search helps you quickly locate all your files based on their content

Enable File Search

Index file contents

Exclude these locations from indexing

ADD FOLDER

REMOVE FOLDER



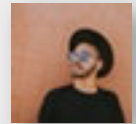
HELP

DEFAULTS

RESET


APPLY

System Settings



Filter...


Startup and Shutdown

 Login Screen (SSDM)

 Autostart

 Background Services

 Desktop Selection

 Boot Splash

Search

 File Search

Plasma Search

Shortcuts

 Standard Shortcuts

 Global Shortcuts

 Custom Shortcuts

Search > Plasma Search

Search...

- Activities**
List and switch between desktop activities
- Applications**
Find applications, control panels and services
- Bookmarks**
Find and open bookmarks
- Calculator**
Calculate expressions
- Command Line**
Executes shell commands
- Date and Time**
The current date and time, locally or in any timezone
- Desktop Search**
Searches through files, emails and contacts
- Desktop Sessions**
Fast user switching
- Dictionary**
Deine words
- Kate Sessions**
Matches Kate Sessions
- KWin**
Interact with the plasma compositor
- Locations**
File and URL opener
- Places**
Open devices and folder bookmarks
- Plasma Desktop Shell**
Interact with the Plasma Desktop Shell

Appearance

Workspace

Style

Network

Hardware



HELP

DEFAULTS

RESET

APPLY

System Settings

Filter...


Startup and Shutdown

 Login Screen (SSDM)

 Autostart

 Background Services

 Desktop Selection

 Boot Splash

Search

 File Search

 Plasma Search

Account Details

 KDE Wallet

 User Manager

Regional Settings

 Language

 Formats

 Spell Check

 Date & Time

Wallet preferences Enable the KDE wallet subsystem

Close Wallet Close when unused for

Close when screensaver starts

Close when last application stops using it

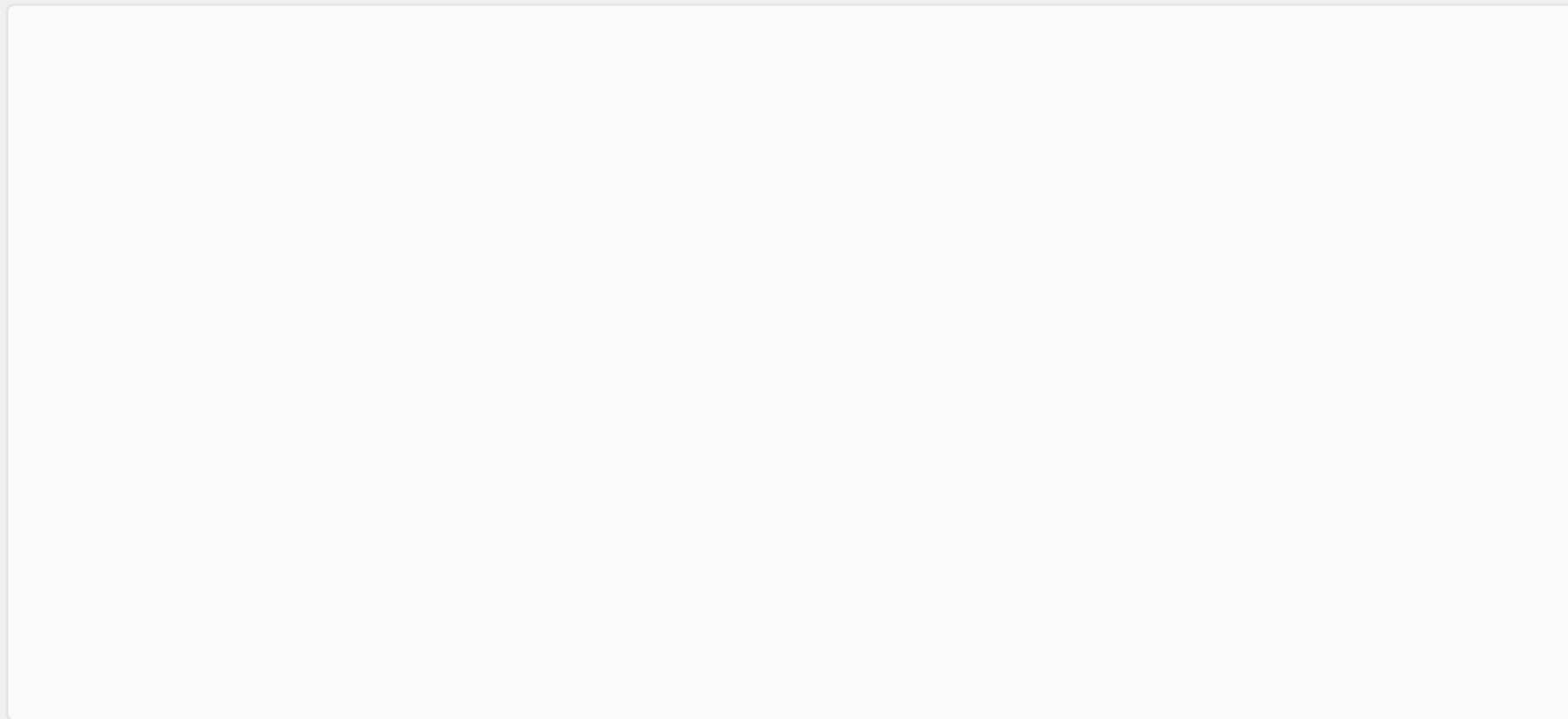
Automatic Wallet Selection Select wallet to use as default

Different wallet for local passwords

Wallet Manager Show manager in system tray

Hide system tray icon when last wallet closes

Access Control



Send a prompt when an application access a wallet

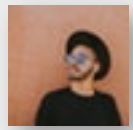
[LAUNCH WALLET MANAGER](#)

[HELP](#)

[DEFAULTS](#)

[RESET](#)

[APPLY](#)



Appearance



Workspace



Style



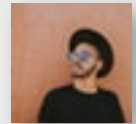
Network



Hardware



System Settings



Filter...

Startup and Shutdown

- Login Screen (SSDM)
- Autostart
- Background Services
- Desktop Selection
- Boot Splash

Search

- File Search
- Plasma Search

Account Details

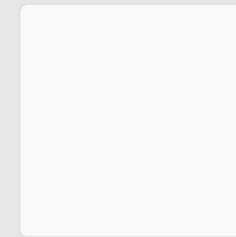
- KDE Wallet
- User Manager

Regional Settings

- Language
- Formats
- Spell Check
- Date & Time

Personalization > User Manager

Andy
New User



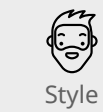
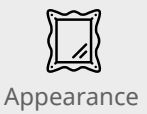
Andy

Real Name

Email Address

Password

- Enable administrator for this user
- Login automatically



HELP

DEFAULTS


RESET

APPLY

System Settings

Filter...


Startup and Shutdown

 Login Screen (SSDM)

 Autostart

 Background Services

 Desktop Selection

 Boot Splash

Search

 File Search

Plasma Search

Personalization


 KDE Wallet

 User Manager

Regional Settings

 Language

 Formats

 Spell Check

 Date & Time

Regional Settings > Language

Language

Available Languages

Mandarin
Spanish
English
Hindi
Arabic
Portuguese
Bengali
Russian
Japanese
Punjabi
German
Javanese
Wu
Malay
Telugu
Vietnamese
Korean
French
Marathi
Tamil

Preferred Languages

Mandarin
Spanish
English



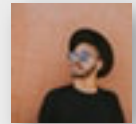
HELP

DEFAULTS

RESET


APPLY

System Settings



Filter...


Startup and Shutdown

 Login Screen (SSDM)

 Autostart

 Background Services

 Desktop Selection

 Boot Splash

Search

 File Search

Plasma Search

Personalization


 KDE Wallet

 User Manager

Regional Settings

 Language

 Local Measures

 Spell Check

 Date & Time

Regional Settings > Local

Numeric, Currency and Time Formats

Region

Numbers

Time

Currency

Measurement Units

Collation and Sorting

Description

Numbers 1,000.01

Time Wednesday, September 6, 2017 7:45:39 PM MDT (long format)
9/6/17 7:45 PM (short format)

Currency \$24

Measurement Units Imperial US



HELP

DEFAULTS


RESET

APPLY

System Settings

Filter...


Startup and Shutdown

 Login Screen (SSDM)

 Autostart

 Background Services

 Desktop Selection

 Boot Splash

Search

 File Search

Plasma Search

Personalization

 KDE Wallet

 User Manager

Regional Settings

 Language

 Formats

 Spell Check

 Date & Time

Regional Settings > Spell Check

Default Language

Options

- Enable autodetection of language
- Automatic spell checking enabled by default
- Skip all uppercase words
- Skip run-together words

Ignored Words

Amarok
KAddressBook
KDevelop
KHTML
KIO
KJS
KMail
KMix
KOrganizer
Konqueror
Kontakt
Nepomuk

ADD

REMOVE

Reset

Apply

HELP

DEFAULTS

RESET

APPLY

System Settings

Filter...


Startup and Shutdown

 Login Screen (SSDM)

 Autostart

 Background Services

 Desktop Selection

 Boot Splash

Search

 File Search

Plasma Search

Personalization

 KDE Wallet

 User Manager

Regional Settings

 Language

 Formats

 Spell Check

 Date & Time

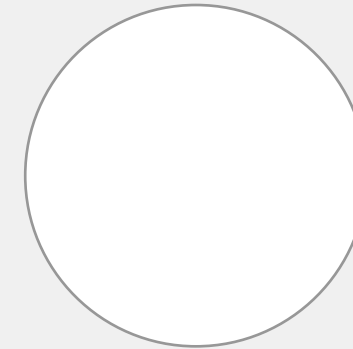
Regional Settings > Date & Time

Date and Time

 JULY 2014 

| SUN | MON | TUE | WED | THU | FRI | SAT |
|-----|-----|-----|-----|-----|-----|-----|
| 30 | 1 | 2 | 3 | 4 | 5 | 6 |
| 7 | 8 | 9 | 10 | 11 | 12 | 13 |
| 14 | 15 | 16 | 17 | 18 | 19 | 20 |
| 21 | 22 | 23 | 24 | 25 | 26 | 27 |
| 28 | 29 | 30 | 31 | 1 | 2 | 3 |

Current local time zone: America/Denver (LMT)



01:57AM

To change the local time zone, select your area from the list below

-
- ACDT
 - ACST
 - ACT
 - ACT
 - ACWST
 - ADT
 - ADT
 - AEDT
 - AEST
 - AET
 - AFT
 - AKDT
 - AKST

HELP

DEFAULTS

RESET

APPLY

System Settings

Filter...



Notifications



Autostart



Background Services



Desktop Selection



Boot Splash

Search



File Search

Plasma Search

Personalization



KDE Wallet



User Manager

Regional Settings



Language



Formats



Spell Check



Date & Time

Personalization > Notifications

Accessibility

Bluetooth System

Discover

KDE Free Space Notifier

Konsole

Konversation

Local system message service

Multimedia System

Network Proxy Configuration

Network Management

Notifications from your devices

Printer detected

Plasma Workspace

PolicyKit authentication dialog

Power Management System

Screen Saver

Spectacle

System Monitor

Touchpad

Wallet

Bounce keys has been enabled or disabled

A lock key has been activated

A lock key has been deactivated

A modifier key has become active

Slow keys has been enabled or disabled

A modifier key has been locked

A modifier key has become inactive

Mouse keys have been enabled or disabled

Sticky keys has been enabled or disabled

Actions

Mark taskbar entry

Show a message in a popup

Play a sound

Log to a file

Run command

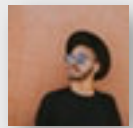
DISABLE SOUNDS FOR ALL OF THESE EVENTS

HELP

DEFAULTS

RESET

APPLY



System Settings

Filter...



Default Applications



File Associations



Locations



Launch Feedback

Applications



File Search

Plasma Search

Personalization



KDE Wallet



User Manager

Regional Settings



Language



Formats



Spell Check



Date & Time

Applications



Default Applications

- Email Client
- File Manager
- Terminal Emulator
- Web Browser

This service allows you to configure your default email client. All KDE applications which need access to an email client application should honor this setting.

Default Component

Use KMail as preferred email client

Use a different email client:

Run in terminal

HELP

DEFAULTS

RESET

APPLY

System Settings

Filter...



Default Applications



File Associations



Locations



Launch Feedback

Applications



File Search

Plasma Search

Personalization



KDE Wallet



User Manager

Regional Settings



Language



Formats



Spell Check



Date & Time

Applications > File Associations

File type all/all

General

Embedding

File Name Patterns

Empty text area for File Name Patterns

Description

Peace On Earth A Wonderful Wish But No Way

ADD

REMOVE

Organize applications order

Empty list area for Organize applications order

MOVE UP

MOVE DOWN

All

all

allfiles

All

All

All

All

All

All

All

All

All

All

All

ADD

REMOVE

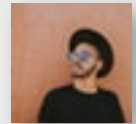
HELP

DEFAULTS

RESET

APPLY

System Settings



Filter...



Default Applications



Appearance



File Associations



Locations



Workspace



Launch Feedback



Style

Applications



File Search



Network

Plasma Search



Hardware

Personalization



KDE Wallet



User Manager

Regional Settings



Language



Formats



Spell Check



Date & Time

Applications > File Associations

File type all/all

General

Embedding

Left Click Action in Konqueror

- Show file in embedded viewer
- Show file in separate viewer
- Use settings for "Application" group
- Ask to save to disk (only for Konqueror browser)

Services Preference Order

MOVE UP

MOVE DOWN

ADD

REMOVE



HELP

DEFAULTS

RESET

APPLY

System Settings

Filter...

 Default Applications

 File Associations

 **Locations**

 Launch Feedback

Applications

 File Search

Plasma Search

Personalization

 KDE Wallet

 User Manager

Regional Settings

 Language

 Formats

 Spell Check

 Date & Time

Applications > Locations

Desktop path

Autostart path

Documents path

Downloads path

Movies path

Pictures path

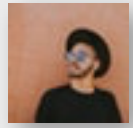
Music path

HELP

DEFAULTS

RESET

APPLY



Appearance



Workspace



Style



Network



Hardware



System Settings

Filter...

 Default Applications

 File Associations

 Locations

 **Launch Feedback**

Accessibility

 Accessibility

Personalization

 KDE Wallet

 User Manager

Regional Settings

 Language

 Formats

 Spell Check

 Date & Time

Applications > Launch Feedback

Busy Cursor

Startup indication timeout

Taskbar Notification Enable taskbar notification

Startup indication timeout

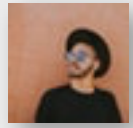


HELP

DEFAULTS

RESET

APPLY



Appearance



Workspace



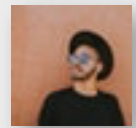
Style



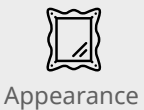
Network



Hardware



Filter...



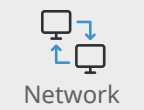
Appearance



Workspace



Style



Network



Hardware

Accessibility



Accessibility

System Bell Use audible system bell

Use customized bell

Sound to play...

BROWSE

Visual Bell Use visual bell

Invert screen

Flash screen [] for []

Modifier Keys Use sticky keys

Lock sticky keys

Turn sticky keys off when two keys are pressed simultaneously

Use system bell whenever a modifier is latched, locked or unlocked

Locking Keys Use system bell when a locking key is activated or deactivated

Notify me when a modifier or locking key changes

CONFIGURE NOTIFICATIONS

Keyboard Filters Enable slow keys

Use system bell when any key is pressed

Use system bell whenever a key is accepted

Use system bell whenever a key is rejected

Bounce Keys Enable bounce keys []

Use system bell whenever a key is rejected

Activation Gestures Use gestures to activate sticky and slow keys []

Disable sticky and slow keys after []

Notifications Use system bell when a gesture toggles an accessibility feature

Show a confirmation when a keyboard accessibility feature is toggled

Show a notification when a keyboard accessibility feature is toggled

CONFIGURE NOTIFICATIONS

Screen Reader Enable screen reader

CONFIGURE NOTIFICATIONS

You may need to log out to allow the screen reader to work properly.

HELP

DEFAULTS

RESET

APPLY

System Settings

Filter...

Default Applications

File Associations

Locations

Launch Feedback

Accessibility

Accessibility

Connections

Connections

Regional Settings

Language

Formats

Spell Check

Date & Time

Connections > Connections

Type here to search connections...

WIFI Network

Name

Automatically connect to this network when it is available

All users may connect to this network

Automatically connect to VPN when using this connection

Firewall zone

Priority

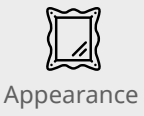
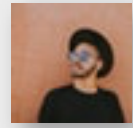
ADVANCED

HELP

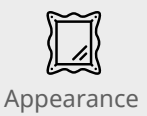
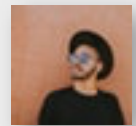
DEFAULTS

RESET

APPLY



System Settings



Filter...

Default Applications

File Associations

Locations

Launch Feedback

Accessibility

Accessibility

Connections

Connections

Regional Settings

Language

Formats

Spell Check

Date & Time

Connections > Connections > ADVANCED

Wi-Fi Details

IP Versions

SSID

Mode

BSSID

Restrict to device

Cloned MAC address

MTU

Visibility Hidden network

Security

Password

Store password for this user only (encrypted)

Randomize

HELP

DEFAULTS

RESET

APPLY

System Settings

Filter...

 Default Applications

 File Associations

 Locations

 Launch Feedback

Accessibility

 Accessibility

Connections

 Connections

Regional Settings

 Language

 Formats

 Spell Check

 Date & Time



Date & Time



Connections > Connections > ADVANCED

Wi-Fi Details

IP Versions

Method

Other DNS Servers

Search Domains

DHCP Client ID

IPv4 is required for this connection

ADD

REMOVE

Method

Other DNS Servers

Search Domains

DHCP Client ID

IPv6 is required for this connection

ADD

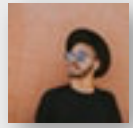
REMOVE

HELP

DEFAULTS

RESET

APPLY



Appearance



Workspace



Style



Network

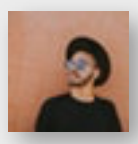


Hardware



System Settings

Filter...



Appearance



Workspace



Style



Network



Hardware



Default Applications

File Associations

Locations

Launch Feedback

Accessibility

Accessibility

Connections

Connections

Settings

Proxy

Connection Preferences

SSL Preferences

Cache

Cookies

Browser Identification

Settings > Proxy

- Proxy** No proxy
- Detect proxy configuration automatically
- Use proxy auto configuration URL:

- Use system proxy configuration:
 - HTTP Proxy:
 - SSL Proxy:
 - FTP Proxy:
 - SOCKS Proxy:
 - Exceptions:
 - Show values for the environment variables

- Use manually specified proxy configuration:
 - HTTP Proxy: Port:
 - Use this proxy server for all protocols
 - SSL Proxy: Port:
 - FTP Proxy: Port:
 - SOCKS Proxy: Port:
 - Exceptions:
 - Use proxy settings only for addresses in the exceptions list

HELP

DEFAULTS

RESET

APPLY

System Settings

Filter...

 Default Applications

 File Associations

 Locations

 Launch Feedback

Accessibility

 Accessibility

Connections

 Connections

Settings

 Proxy

 Connection Preferences

 SSL Preferences

 Cache

 Cookies

 Browser Identification

Timeout Values

Socket read

Proxy connect

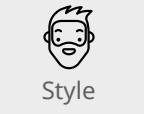
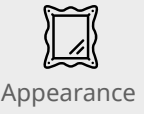
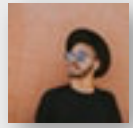
Server connect

Server response

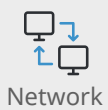
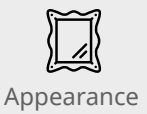
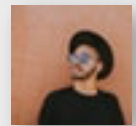
Global Options Mark partially uploaded files

FTP Options Enable pasive mode (PASV)

Mark partially uploaded files



System Settings



Filter...

Default Applications

File Associations

Locations

Launch Feedback

Accessibility

Accessibility

Connections

Connections

Settings

Proxy

Connection Preferences

SSL Preferences

Cache

Cookies

Browser Identification

Settings > SSL Preferences

SSL Signers

| Organization / Common Name | Organizational Unit |
|----------------------------|---------------------|
|----------------------------|---------------------|

- GoDaddy
- HostGator
- BlueHost
- Ipage
- InmotionHosting
- Linode
- SiteGround
- A2 Hosting
- DreamHost
- LiquidWeb
- Web.com
- FatCow
- eHost
- InterServer
- IPower
- A Small Orange
- HostPapa
- FastHosts
- HostDime
- Pair.com

DETAILS

REMOVE

ADD

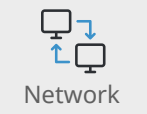
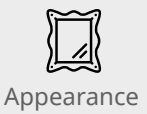
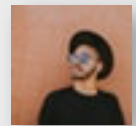
HELP

DEFAULTS


RESET

APPLY

System Settings



Filter...

 Default Applications

 File Associations

 Locations

 Launch Feedback

Accessibility

 Accessibility

Connections

 Connections

Settings


 Proxy

 Connection Preferences

 SSL Preferences

 Cache

 Cookies

 Browser Identification

Settings > Cache

- Policy
- Use cache
 - Keep cache in sync
 - Use cache whenever possible
 - Offline browsing mode

Disk cache size

[CLEAR CACHE](#)

[HELP](#)

[DEFAULTS](#)

[RESET](#)

[APPLY](#)

System Settings

Filter...

 Default Applications

 File Associations

 Locations

 Launch Feedback

Accessibility

 Accessibility

Connections

 Connections

Settings


 Proxy

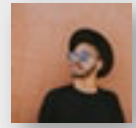
 Connection Preferences


 SSL Preferences

 Cache


 Cookies

 Browser Identification



 Appearance

 Workspace

 Style

 Network

 Hardware



Settings > Cookies

Policy Management

- Enable cookies
- Only accept cookies from originating server
- Automatically accept session cookies

- Default Policy
- Accept all cookies
 - Accept until end of session
 - Ask for confirmation
 - Reject all cookies

Site Policy

| Domain | Policy |
|--------|--------|
|--------|--------|

DELETE ALL

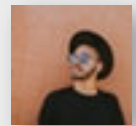
HELP

DEFAULTS

RESET

APPLY

System Settings



Appearance



Workspace



Style



Network



Hardware



Filter...



Default Applications



File Associations



Locations



Launch Feedback

Accessibility



Accessibility

Connections



Connections

Settings



Proxy



Connection Preferences



SSL Preferences



Cache



Cookies



Browser Identification

Settings > Cookies

Policy Management

| Site | Cookie Names |
|------|--------------|
|------|--------------|

CONFIGURE POLICY

RELOAD LIST

DELETE ALL

Name

Value

Domain

Path

Expires

Secure

HELP

DEFAULTS

RESET

APPLY

System Settings

Filter...



Default Applications



File Associations



Locations



Launch Feedback

Accessibility



Accessibility

Connections



Connections

Settings



Proxy



Connection Preferences



SSL Preferences



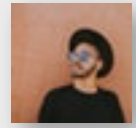
Cache



Cookies



Browser Identification



Appearance



Workspace



Style



Network



Hardware



Settings > Browser Identification

Default Identification



Send identification

Mozilla/5.0 (X11; Linux x86_64) HTML/.38.0 (like gecko) Konqueror/5 KIO/5.38



Add operating system name



Add operating system version



Add machine (processor) type



Add language information

Site Specific Identification

| Site Name | Identification | User Agent |
|-----------|----------------|------------|
|-----------|----------------|------------|

DELETE ALL

HELP

DEFAULTS

RESET

APPLY

System Settings

Filter...

Connectivity



Connectivity

Bluetooth



Devices



Adapters



Advanced Settings

Input Devices



Keyboard



Mouse



Joystick



Touchpad

Display and Monitor



Displays



Compositor



Gamma

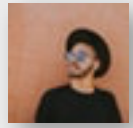
Connectivity > Connectivity

These settings apply only to network browsing only.

Default user name

Default password

Reset



Appearance



Workspace



Style



Network



Hardware



System Settings

Filter...

Connectivity

Connectivity

Bluetooth

Devices

Adapters

Advanced Settings

Input Devices

Keyboard

Mouse

Joystick

Touchpad

Display and Monitor

Displays

Compositor

Gamma

Bluetooth > Devices

Type here to search connections...

- Android Phone

No devices currently paired

ADD NEW DEVICE



Appearance



Workspace



Style



Network



Hardware



HELP

DEFAULTS

RESET

APPLY

System Settings

Filter...

Connectivity

Connectivity

Bluetooth

Devices

Adapters

Advanced Settings

Input Devices

Keyboard

Mouse

Joystick

Touchpad

Display and Monitor

Displays

Compositor

Gamma

Bluetooth > Adapters

andy-pc (98:1B:54:34:3G:93) - hci0

Name

Powered

Visibility Hidden
 Always visible
 Temporarily visible

Discover Time 1 Minute



HELP

DEFAULTS

RESET

APPLY

System Settings

Filter...

Connectivity

 Connectivity

Bluetooth

 Devices

 Adapters

 **Advanced Settings**

Input Devices

 Keyboard

 Mouse

 Joystick

 Touchpad

Display and Monitor

 Displays

 Compositor

 Gamma

Bluetooth > Advanced Settings

Integration Enable Bluetooth integration

Receiving Files Receive files from remote devices

Save files in:

Accept automatically:



HELP

DEFAULTS

RESET

APPLY



Appearance



Workspace



Style



Network



Hardware

System Settings

Filter...

Connectivity

Connectivity

Bluetooth

Devices

Adapters

Advanced Settings

Input Devices

Keyboard

Mouse

Joystick

Touchpad

Display and Monitor

Displays

Compositor

Gamma

Input Devices > Keyboard

Hardware Layouts Advanced

Keyboard model: Generic | Generic 101-key PC

- NumLock on Plasma Startup
 - Turn on
 - Turn off
 - Leave unchanged

- Keyboard Repeat
 - Turn on
 - Turn off
 - Leave unchanged

Delay

Rate

Test

Reset

HELP

DEFAULTS

RESET

APPLY

System Settings

Filter...

Connectivity

Connectivity

Bluetooth

Devices

Adapters

Advanced Settings

Input Devices

Keyboard

Mouse

Joystick

Touchpad

Display and Monitor

Displays

Compositor

Gamma

Input Devices > Keyboard

Hardware Layouts Advanced

Layout Indicator Show layout indicator
 Show for single layout

Layout Indicator Icon Show flag
 Show label
 Show label on flag

Switching Policy

Shortcuts for Switching Layout

Main shortcuts

3rd level shortcut

Alternative shortcut

| Map | Layout | Variant | Label | Shortcut |
|-----|--------|---------|-------|----------|
| | | | | |

Spare layout

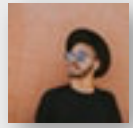
Main layout count

HELP

DEFAULTS

RESET

APPLY



Appearance



Workspace



Style



Network



Hardware



System Settings



Filter...

Connectivity

 Connectivity

Bluetooth

 Devices

 Adapters

 Advanced Settings

Input Devices

 Keyboard

 Mouse

 Joystick

 Touchpad

Display and Monitor

 Displays

 Compositor

 Gamma

Input Devices > Keyboard

Configure keyboard options

DISABLE ALL

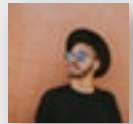



HELP

DEFAULTS

RESET

APPLY




Appearance


Workspace


Style


Network


Hardware

System Settings

Filter...


Connectivity

 Connectivity

Bluetooth

 Devices

 Adapters

 Advanced Settings

Input Devices

 Keyboard

 **Mouse**

 Joystick

 Touchpad

Display and Monitor

 Displays

 Compositor

 Gamma

Input Devices > Mouse

Button Order Right handed

Left handed

Reverse scroll direction

Icons Double-click to open files and folders (select icons on first click)

Single-click to open files and folders



Advanced

Pointer Acceleration

Pointer threshold

Double click interval

Drag start time

Drag start distance

Mouse wheel scrolls by

Keyboard Navigation

Move pointer with keyboard (using the num pad)

Acceleration delay

Repeat interval

Acceleration time

Maximum Speed

Acceleration profile



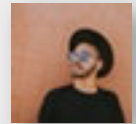
HELP

DEFAULTS

RESET

APPLY

System Settings



Filter...

Connectivity

Connectivity

Bluetooth

Devices

Adapters

Advanced Settings

Input Devices

Keyboard

Mouse

Joystick

Touchpad

Display and Monitor

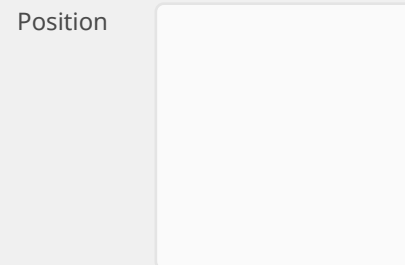
Displays

Compositor

Gamma

Input Devices > Joystick

Device



State Show trace

CALIBRATE

Axes

Value



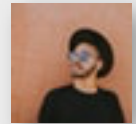
HELP

DEFAULTS

RESET

APPLY

System Settings



Filter...

Connectivity

Connectivity

Bluetooth

Devices

Adapters

Advanced Settings

Input Devices

Keyboard

Mouse

Joystick

Touchpad

Display and Monitor

Displays

Compositor

Gamma

Input Devices

> Touchpad

Taps

Scrolling

Pointer Motion

Sensitivity

Toggle Touchpad



Mouse Click Emulation

One finger

Two fingers

Three fingers

Corners

Top left

Top right

Bottom left

Bottom right

Tap and drag Gesture

Locked Drags

Timeout

Tap Detection

Maximum time

Maximum finger movement

Maximum time for double tap

Single tap timeout

HELP

DEFAULTS

RESET

APPLY



System Settings

Filter...

Connectivity

Connectivity

Bluetooth

Devices

Adapters

Advanced Settings

Input Devices

Keyboard

Mouse

Joystick

Touchpad

Display and Monitor

Displays

Compositor

Gamma

Input Devices

> Touchpad

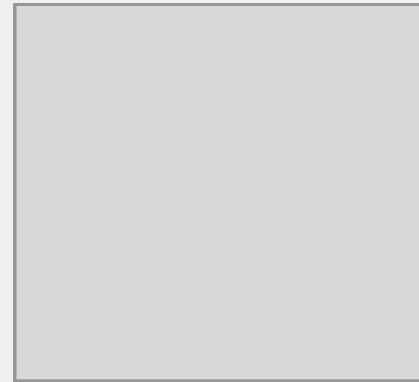
Taps

Scrolling

Pointer Motion

Sensitivity

Toggle Touchpad



Edge scrolling Vertical

Horizontal

Two finger scrolling Vertical

Horizontal

Reverse scrolling Vertical

Horizontal

Scrolling Distance

Vertical

Horizontal

Coasting

Minimum speed

Deceleration

Corner coasting Enable

Circular Scrolling

When used together with vertical scrolling, hitting the upper or lower right corner will seamlessly switch over from vertical to circular scrolling

Trigger region

Angle

HELP

DEFAULTS

RESET

APPLY

System Settings

Filter...

Connectivity

Connectivity

Bluetooth

Devices

Adapters

Advanced Settings

Input Devices

Keyboard

Mouse

Joystick

Touchpad

Display and Monitor

Displays

Compositor

Gamma

Input Devices



Touchpad



Taps

Scrolling

Pointer Motion

Sensitivity

Toggle Touchpad



Speed

Minimum

Maximum

Acceleration

Pressure-Dependent Motion

Minimum pressure

Minimum Factor

Minimum pressure

Minimum Factor

Noise Cancellation

Vertical

Horizontal

HELP

DEFAULTS

RESET

APPLY

System Settings

Filter...

Connectivity

 Connectivity

Bluetooth

 Devices

 Adapters

 Advanced Settings

Input Devices

 Keyboard

 Mouse

 Joystick

 Touchpad

Display and Monitor

 Displays

 Compositor

 Gamma

Input Devices



Touchpad



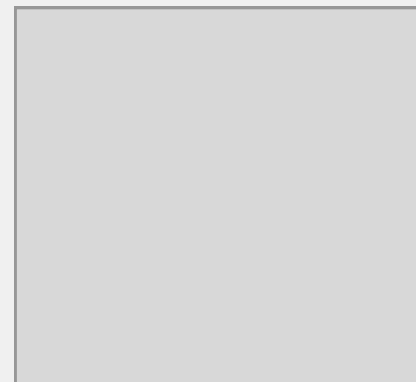
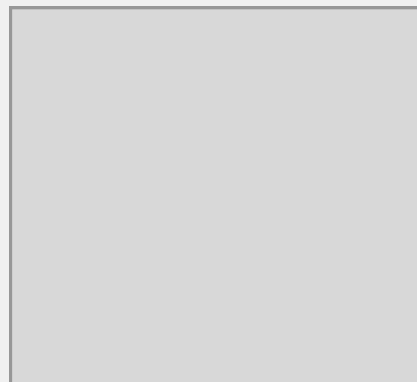
Taps

Scrolling

Pointer Motion

Sensitivity

Toggle Touchpad



Sensitivity

Pressure for detecting a touch

Pressure for detecting a release

Pain Detection

Minimum pressure

Minimum pressure

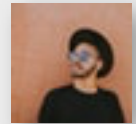
HELP

DEFAULTS

RESET

APPLY

System Settings



Filter...

Connectivity

Connectivity

Bluetooth

Devices

Adapters

Advanced Settings

Input Devices

Keyboard

Mouse

Joystick

Touchpad

Display and Monitor

Displays

Compositor

Gamma

Input Devices > Touchpad

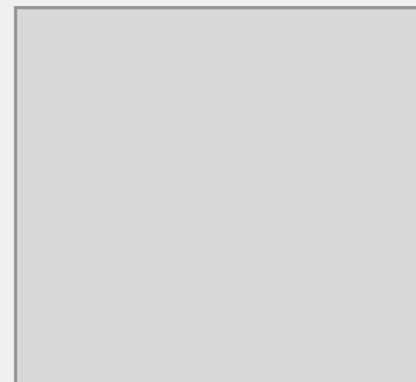
Taps

Scrolling

Pointer Motion

Sensitivity

Toggle Touchpad



Keyboard shortcuts

CONFIGURE

Disable touchpad when typing

Timeout

Disable taps and scrolling only

Disable touchpad when mouse is plugged in

Notifications

CONFIGURE

Ignored devices



HELP

DEFAULTS

RESET

APPLY

System Settings

Filter...

Connectivity

 Connectivity

Bluetooth

 Devices

 Adapters

 Advanced Settings

Input Devices

 Keyboard

 Mouse

 Joystick

 Touchpad

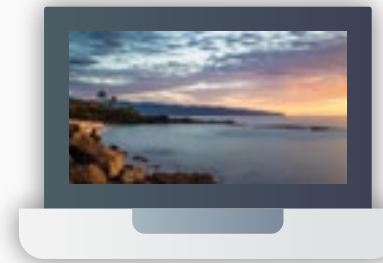
Display and Monitor

 Displays

 Compositor

 Gamma

Display and Monitor > Displays



Primary Display Laptop Screen

Display Enabled

Resolution

Orientation

Refresh Rate

UNIFY OUTPUTS

SCALE DISPLAY

HELP

DEFAULTS

RESET

APPLY

System Settings

Filter...

Connectivity

 Connectivity

Bluetooth

 Devices

 Adapters

 Advanced Settings

Input Devices

 Keyboard

 Mouse

 Joystick

 Touchpad

Display and Monitor

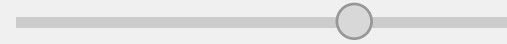
 Displays

 Compositor

 Gamma

Display and Monitor > Compositor

Enable compositor on startup

Animation speed 

Instant

Very slow

Scale method Accurate

Rendering backend OpenGL 3.1

Tearing prevention (vsync) Automatic

Keep window thumbnails Only for Shown Windows

Allow applications to block compositing



HELP

DEFAULTS

RESET

APPLY

System Settings

Filter...

Connectivity

 Connectivity

Bluetooth

 Devices

 Adapters

 Advanced Settings

Input Devices

 Keyboard

 Mouse

 Joystick

 Touchpad

Display and Monitor

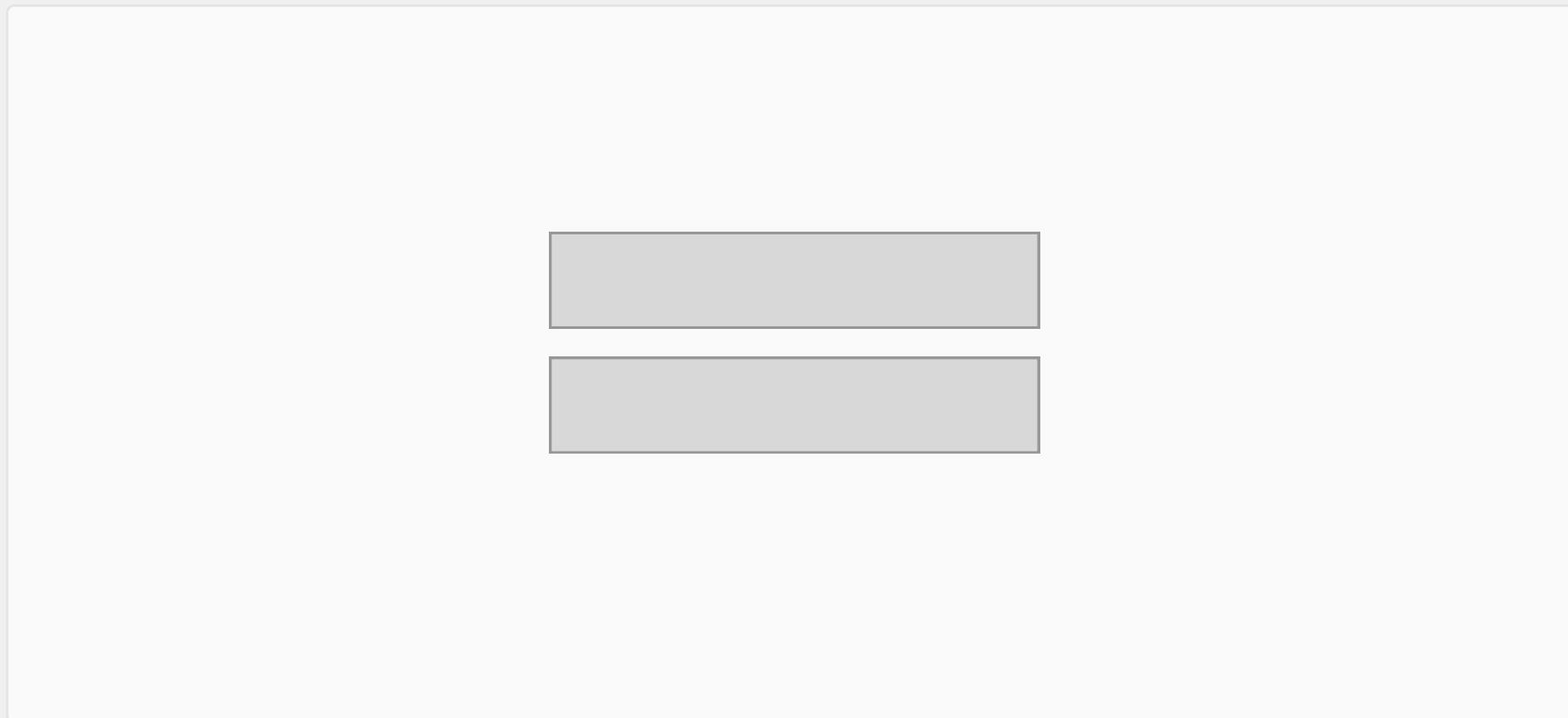
 Displays

 Compositor

 Gamma

Display and Monitor > Gamma

Select test picture Gray scale



Gamma

Red

Green

Blue

Sync screens Screen 1

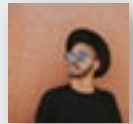
Save settings system wide

HELP

DEFAULTS

RESET

APPLY



System Settings

Filter...

Multimedia



Audio Volume



Appearance



Workspace



Style



Network



Hardware



Audio and Video

Input Devices



Adapters



Advanced Settings

Input Devices



Keyboard



Mouse



Joystick



Touchpad

Display and Monitor



Displays



Compositor



Gamma

Multimedia



Audio Volume

Devices

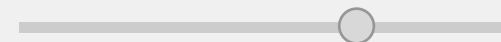
Applications

Advanced

Outputs

Built-in Audtio Analog Stereo

Port

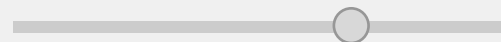


47%

Inputs

Built-in Audtio Analog Stereo

Port



47%

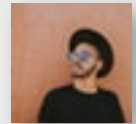
HELP

DEFAULTS

RESET

APPLY

System Settings



Filter...

Multimedia



Appearance



Workspace



Style



Network



Hardware



Audio Volume



Audio and Video

Input Devices



Adapters



Advanced Settings

Input Devices



Keyboard



Mouse



Joystick



Touchpad

Display and Monitor



Displays



Compositor



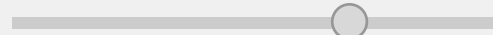
Gamma

Multimedia > Audio Volume

Devices Applications Advanced

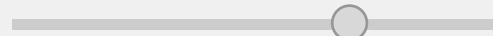
Playback

Chrome Playback



Capture

Chrome Playback



HELP

DEFAULTS

RESET

APPLY

System Settings

Filter...


Multimedia

 Audio Volume

 Audio and Video

Input Devices

 Adapters

 Advanced Settings

Input Devices

 Keyboard

 Mouse

 Joystick

 Touchpad

Display and Monitor

 Displays

 Compositor

 Gamma

Multimedia > Audio Volume

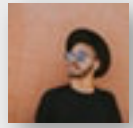
Devices Applications Advanced

Device Profiles

Builtin Audio profile

Advanced Output Configuration

- Add virtual output device for simultaneous output on all local sound cards
- Automatically switch all running streams when a new output becomes available



Appearance



Workspace



Style



Network



Hardware



System Settings

Filter...

Multimedia

Audio Volume

Audio and Video

Input Devices

Adapters

Advanced Settings

Input Devices

Keyboard

Mouse

Joystick

Touchpad

Display and Monitor

Displays

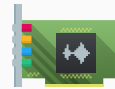
Compositor

Gamma

Multimedia > Audio and Video

Device Preferences Audio Hardware Setup Backend

- Audio Playback
 - Notifications
 - Music
 - Video
 - Communication
 - Games
 - Accessibility
- Audio Recording
 - Communication
 - Recording
 - Control
- Video Recording
 - Communication
 - Recording



Audio playback device preference for the music category

APPLY LIST TO

TEST

PREFER

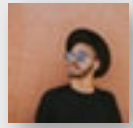
DETER

HELP

DEFAULTS

RESET

APPLY



Appearance



Workspace



Style



Network



Hardware



System Settings

Filter...

Multimedia

 Audio Volume


 Audio and Video

Input Devices

 Adapters

 Advanced Settings

Input Devices

 Keyboard

 Mouse

 Joystick

 Touchpad

Display and Monitor

 Displays

 Compositor

 Gamma

Multimedia > Audio and Video

Device Preferences Audio Hardware Setup Backend

Hardware

Sound card

Profile

Device Configuration

Sounds Device

Connector

Speaker Placement and Testing

Button

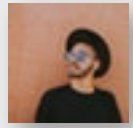
Button

HELP

DEFAULTS

RESET

APPLY



Appearance



Workspace



Style



Network



Hardware



System Settings

Filter...

Multimedia

 Audio Volume

 Audio and Video

Input Devices

 Adapters

 Advanced Settings

Input Devices

 Keyboard

 Mouse

 Joystick

 Touchpad

Display and Monitor

 Displays

 Compositor

 Gamma

Multimedia > Audio and Video

Device Preferences Audio Hardware Setup Backend

Phonon VLC

PREFER

DEFER



Phonon VLC

Website: <http://www.videolan.org>

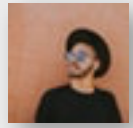
Version: 0.9.0

HELP

DEFAULTS

RESET

APPLY



Appearance



Workspace



Style



Network



Hardware



System Settings

Filter...

Multimedia

 Audio Volume

 Audio and Video


Power Management

 Energy Saving

 Activity Settings

 Keyboard

Input Devices

 Mouse

 Joystick

 Touchpad

Display and Monitor

 Displays

 Compositor

 Gamma

Power Management > Energy Saving

On AC Power

On Battery

On Low Battery

Screen Brightness Level

Dim screen After

Screen Energy Saving Switch off after

Suspend session After

Button events handling When laptop lid closed

Even when an external monitor is connected When power button pressed

Run script Script

Run script

Wireless

Wi-Fi

Mobile boradband

Bluetooth

HELP

DEFAULTS

RESET

APPLY

System Settings

Filter...

Multimedia

Audio Volume

Audio and Video

Power Management

Energy Saving

Activity Settings

Keyboard

Input Devices

Mouse

Joystick

Touchpad

Display and Monitor

Displays

Compositor

Gamma

Power Management > Energy Saving

On AC Power

On Battery

On Low Battery

Screen Brightness Level

Dim screen After

Screen Energy Saving Switch off after

Suspend session After

Button events handling When laptop lid closed

Even when an external monitor is connected When power button pressed

Run script Script

Run script

Wireless

Wi-Fi

Mobile broadband

Bluetooth

HELP

DEFAULTS

RESET

APPLY

System Settings

Filter...

Multimedia

Audio Volume

Audio and Video

Power Management

Energy Saving

Activity Settings

Keyboard

Input Devices

Mouse

Joystick

Touchpad

Display and Monitor

Displays

Compositor

Gamma

Power Management > Energy Saving

On AC Power

On Battery

On Low Battery

Screen Brightness Level

Dim screen After

Screen Energy Saving Switch off after

Suspend session After

Button events handling When laptop lid closed

Even when an external monitor is connected When power button pressed

Run script Script

Run script

Wireless

Wi-Fi

Mobile broadband

Bluetooth

HELP

DEFAULTS

RESET

APPLY

System Settings


Filter...

Multimedia

 Audio Volume

 Audio and Video

Power Management

 Energy Saving

 Activity Settings

 Keyboard

Input Devices

 Mouse

 Joystick

 Touchpad

Display and Monitor

 Displays

 Compositor

 Gamma

Power Management > Activity Settings

- Default
- Don't use special settings
 - Define a special behavior
 - Use separate settings (advanced users only)



HELP

DEFAULTS

RESET

APPLY

System Settings

Filter...

Multimedia

Audio Volume

Audio and Video

Power Management

Energy Saving

Activity Settings

Advanced Settings

Input Devices

Mouse

Joystick

Touchpad

Display and Monitor

Displays

Compositor

Gamma

Power Management > Activity Settings

Advanced Power Management Settings:

Low level [dropdown]

Critical level [dropdown]

At critivcal level [dropdown]

Media Playback Pause media players when suspending

Configure Notifications



HELP

DEFAULTS

RESET

APPLY

System Settings

Filter...

Multimedia

 Audio Volume

 Audio and Video

Power Management

 Energy Saving

 Activity Settings

 Advanced Settings

KDE Connect

 KDE Connect

Display and Monitor

 Displays

 Compositor

 Gamma

KDE Connect > KDE Connect

andyPC

No device selected

If you own an android device, make sure to install the KDE Connect Android app (also available from F-Droid) and it should appear in the list.

If you are having problems, visit the KDE Connect Community Wiki for help.

REFRESH

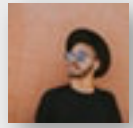
HELP

DEFAULTS

RESET

APPLY

System Settings



Filter Multimedia



Appearance



Workspace



Style



Network



Hardware



Audio Volume



Audio and Video

Power Management



Energy Saving



Activity Settings



Advanced Settings

KDE Connect



KDE Connect

Printers

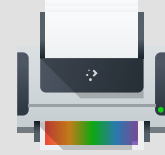


Printers

Hardware > Printers > Printers



HP Photosmart 7520



HP Photosmart 7520

Currently idle

Location: 191.8.3.4

Type: HP Photosmart 7520 Series, hpcups 3.4.5

- Make default printer
- Share this printer
- Reject new print jobs

Maintenance ▾

CONFIGURE

OPEN PRINT QUEUE

- System Preferences**
- Share printers connected to this system
 - Allow printing from the Internet
 - Allow remote printer administration
 - Allow users to cancel any job (not just their own)



HELP

DEFAULTS

RESET

APPLY

System Settings



Filter...

Multimedia

 Audio Volume

 Audio and Video

Power Management

 Energy Saving

 Activity Settings

 Advanced Settings

KDE Connect

 KDE Connect

Printers

 Printers

Removable Storage

 Device Actions

 Digital Camera

 Removable Devices

Removable Storage > Device Actions

Manage actions available to the user when connecting new devices

Download photos with Gwenview

Download photos with Gwenview

Open with File Manager

Open with File Manager

Open with File Manager

Storage Volume

Camera

Portable Media Player

Storage Volume, Storage Access, Storage Drive

Camera

ADD

NO ACTION REQUIRED

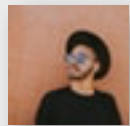
EDIT

HELP

DEFAULTS

RESET

APPLY



Appearance



Workspace



Style



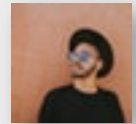
Network



Hardware



System Settings



Filter...

Multimedia

Audio Volume

Audio and Video

Power Management

Energy Saving

Activity Settings

Advanced Settings

KDE Connect

KDE Connect

Printers

Printers

Removable Storage

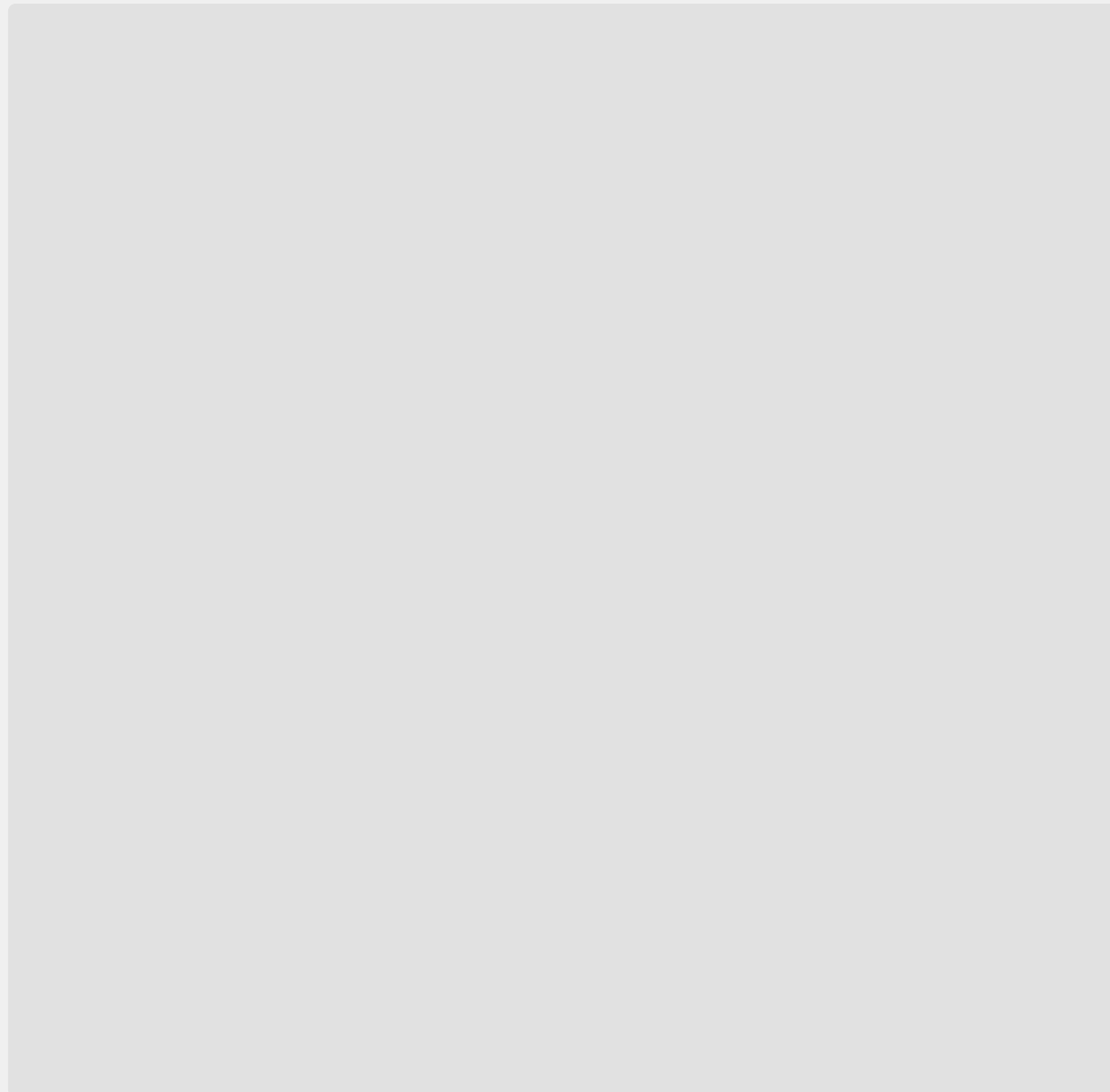
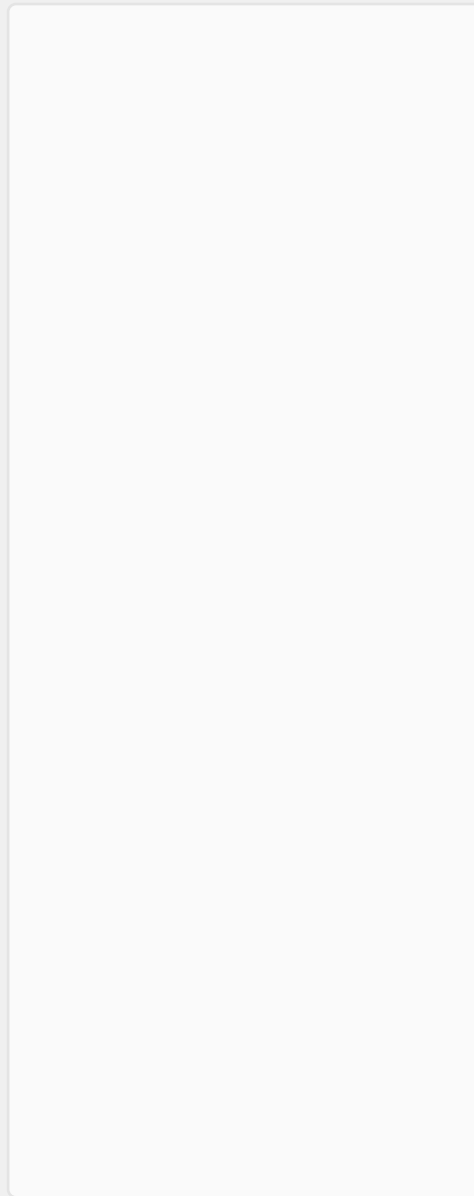
Device Actions

Digital Camera

Removable Devices

Removable Storage > Digital Camera

Configure Kamera



HELP

DEFAULTS

RESET

APPLY

System Settings



Filter...

Multimedia

 Audio Volume

 Audio and Video

Power Management

 Energy Saving

 Activity Settings

 Advanced Settings

KDE Connect

 KDE Connect

Printers

 Printers

Removable Storage

 Device Actions

 Digital Camera

 Removable Devices

Removable Storage > Removable Devices

- Settings**
- Enable automatic mounting of removable media
 - Only automatically mount removable media that has been manually mounted before
 - Mount all removable media at login
 - Automatically mount removable media when attached

| Device | Device Overrides | |
|----------------------|--------------------|---------------------|
| | Automount on Login | Automount on Attach |
| Attached Devices | | |
| 110.7 GiB Har... | | |
| Disconnected Devices | | |

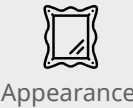
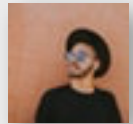
FORGET DEVICE

HELP

DEFAULTS

RESET

APPLY





Button



Button

